



# **2023 Sanitary Sewer Management Plan (SSMP)**

Public Works Commission

July 13, 2023



# Outline

- Regulatory background
- Sections of the SSMP
- Updated sections of the SSMP
- Discussion



# Regulatory Background

- State Water Resources Control Board (SWRCB) December 2022, effective June 2023.
- Sanitary Sewer Overflows (SSOs) are preventable by reviewing causes and developing programs.
- SSMP is a SSO prevention plan.



# Sections of the SSMP

1. SSMP Goal and Introduction
- 2. Organization**
3. Legal Authority
- 4. Operations and Maintenance Program**
5. Design and Performance Provisions
- 6. Spill Emergency Response Plan**
- 7. Sewer Pipe Blockage Control Program**
- 8. System Evaluation, Capacity Assurance and Capital Improvement**
- 9. Monitoring Measurement and Plan Modifications**
- 10. Internal Audits**
- 11. Communications Program**



# Key Definitions

- Sanitary Sewer Overflows (SSO) – a spill from a sanitary sewer system due to operational failure and or infrastructure failure. SSO may threaten public health, beneficial uses of waters of the States and the environment.



# Key Definitions

## SSO Categories

Category 1 (CAT 1)	Any spill volume that result in a discharge to surface water, drainage conveyance system that is not fully contained or captured. Spill not fully contained or captured is considered a discharge to surface water.
Category 2 (CAT 2)	A spill > 1,000 or greater, from or caused by a sanitary sewer system that does not discharge to a surface water.
Category 3 (CAT 3)	A spill 50 to 1,000 gallons that do not discharge to a surface water. A spill 50 to 1,000 gallons that spills out of a lateral and is caused by a failure or blockage in the sanitary sewer system.
Category 4 (CAT 4)	A spill < 50 gallons that do not discharge to a surface water, including spills out of a lateral that is caused by a blockage in the sanitary sewer system.

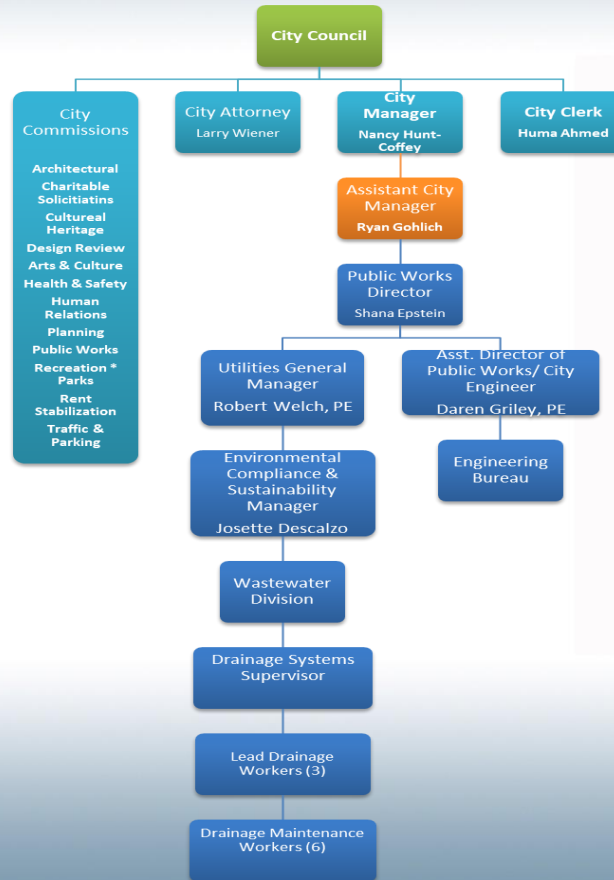


# Goal of the SSMP

- SSMP is a plan and schedule:
  - Properly manage, operate and maintain the sewer system.
  - Reduce and prevent spills
  - Contain and mitigate spills that do occur



# Section 2: Organization







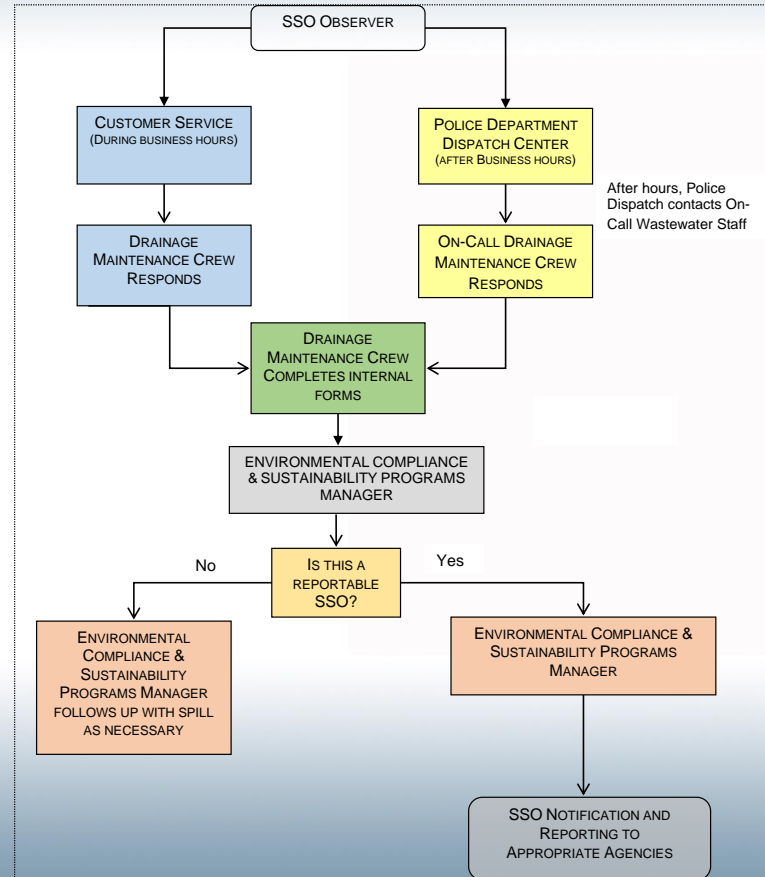
# Section 2: Organization

## SSO Response Chain of Communications

Report sewer overflows by calling:

Business hrs.: 310-285-2467

After Business hrs.: 310-550-4951





## Section 4. Operations and Maintenance

- System map
- Infor – asset management system
- CCTV Inspection: completed systemwide





# Section 4. Operations and Maintenance

## Capital Improvement Program, Sanitary Sewer, FY 2022/23 through 2027/2028

Project	Fiscal Year						5-Year Total
	22/23 Estimated Carryovers	23/24	24/25	25/26	26/27	27/28	
<b>Sewer System Repairs</b>	\$18,258,451	\$1,807,900	\$1,865,000	\$1,500,00	\$2,500,00	\$2,500,00	\$28,461,351
<b>Hyperion Plant - Capital Component</b>	\$4,940,326	\$2,436,850	\$2,478,825	\$2,646,610	\$2,896,505	\$3,000,000	\$18,399,116
<b>Public Works Asset Management System</b>	\$159,029	\$12,500	\$10,000	\$10,000	\$10,000	\$10,000	\$211,529
<b>Total</b>	\$23,357,806	\$4,257,250	\$4,353,825	\$4,156,610	\$5,406,505	\$5,614,817	\$47,518,489



# Section 6. Overflow Response Plan

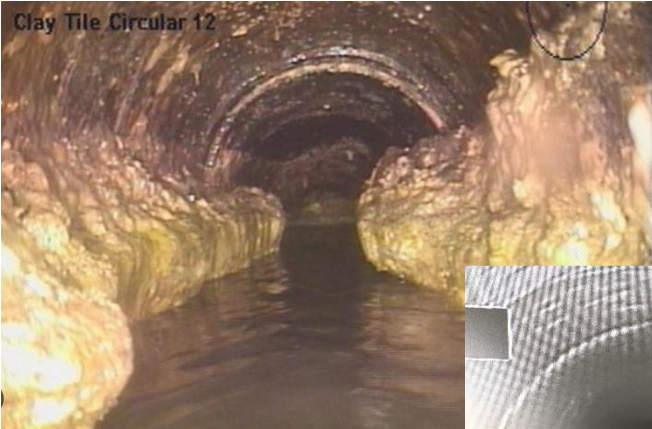
## Report sewer overflows by calling:

- Business hrs.: 310-285-2467
- After Business hrs.: 310-550-4951

SSO Categories	Agencies to be Notified	Time Frame
Category 1 (CAT 1)	<ul style="list-style-type: none"><li>• Office of Emergency Services</li><li>• LA County Dept. of Public Health</li><li>• LA County Flood Control District</li><li>• Regional Water Quality Control Board</li></ul>	<ul style="list-style-type: none"><li>• 2 hrs. after knowing of the SSO</li><li>• 2 hrs. after knowing of the SSO</li><li>• ASAP but less than 1 hour after the spill</li><li>• 2 hrs. after knowing the SSO</li></ul>
Category 2 (CAT 2)	<ul style="list-style-type: none"><li>• LA County Dept. of Public Health</li><li>• LA County Flood Control District</li><li>• Regional Water Quality Control Board</li></ul>	<ul style="list-style-type: none"><li>• 2 hrs. after knowing of the SSO</li><li>• ASAP but less than 1 hour after the spill</li><li>• 2 hrs. after knowing the SSO</li></ul>
Category 3 (CAT 3)	Not Applicable	Not Applicable
Category 4 (CAT 4)	Not Applicable	Not Applicable



# Section 7. Sewer Pipe Blockage Program



Beverly Hills Wastewater

11/07/2018 02:57 PM

4.1X

Dist N/A

-118.39128° W

34 05986° N







# Section 7. Sewer Pipe Blockage Program



## HOW TO MAINTAIN YOUR PRIVATE SEWER LATERAL LINE

### *Do's and Don'ts of Disposal*

**Yes:** human waste, soaps, water, toilet paper

**No:** solids (feminine products, q-tips, wipes, diapers, cloth, etc.) fats/oils/grease, paper towels and other paper products, food waste, pharmaceuticals, hazardous waste, cements and soils.

It is important that only allowable materials are sent down the drain so blockages in private laterals and the City main can be avoided. Also be mindful of what you send through your drains, especially hazardous wastes and pharmaceuticals, as these materials can have an impact on the treatment of your wastewater.

### *Annual Maintenance*

Lateral lines should be inspected and cleaned annually by a licensed plumber to avoid blockages and overflows. Cleaning involves either the use of a hydrojet or a snake to clear the line of any build up or tree roots that may have come into the line. Make sure to notify the Public Works Department when you have scheduled your inspection so personnel can be present to collect and remove debris that is deposited into the City sewer system.

## SOME TIPS WHEN SCHEDULING YOUR ANNUAL MAINTENANCE

1. Get three different quotes
2. Make sure you are using a licensed plumber or contractor who has all required permits
3. Ask for a video inspection for a view of the pipe before and after the work is done



## TO MAINTAIN, CONNECT, OR ABANDON A LINE

A permit is required to connect or abandon a sewer lateral. Please call:

Beverly Hills Public Works Department at  
(310) 285-2467

## ADDITIONAL WASTEWATER INFORMATION

In addition to awareness of issues with your house sewer connection, it is important to be aware of other wastewater issues as well, such as sewer overflows. Any sort of sewer overflow, whether that be at your residence or on a city street, should be reported right away, as this leakage can pose threats to the public and environmental health.

To report an overflow or leak, contact Beverly Hills Public Works Customer Service.

### **Business Hours:**

Monday - Thursday 7:30 am - 5:30 pm,  
Friday 8:00 am - 5:00 pm

(310) 285-2467

### **After Hours:**

(310) 550-4900





## Section 8. System Evaluation, Capacity Assurance and Capital Improvement

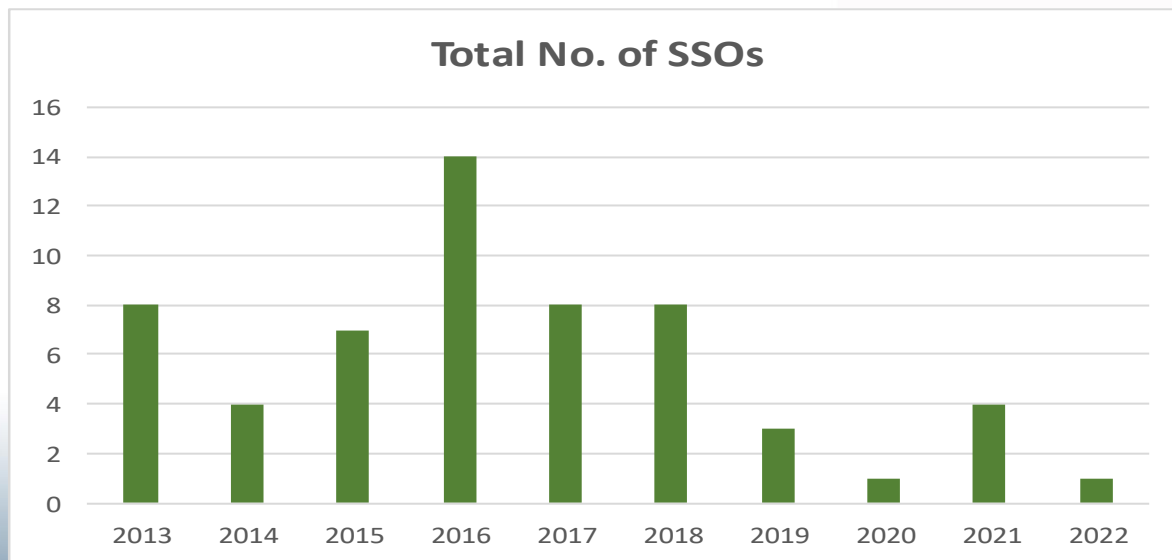
- Hydraulic modeling in 2010- Sewer Master Plan and 2020 Integrated Water Resources Master Plan (IWRMP)
- \$6M in Capital Improvement Projects (CIP) completed from 2019 to present
- Capacity improvements:
  - Gregory Way Trunkline
  - Roxbury Park Realignment Project



## Section 9. Monitoring Measurement and Plan Modifications

- Metric – No. and causes of SSOs.

### Total Number of SSOs from 2013-2022

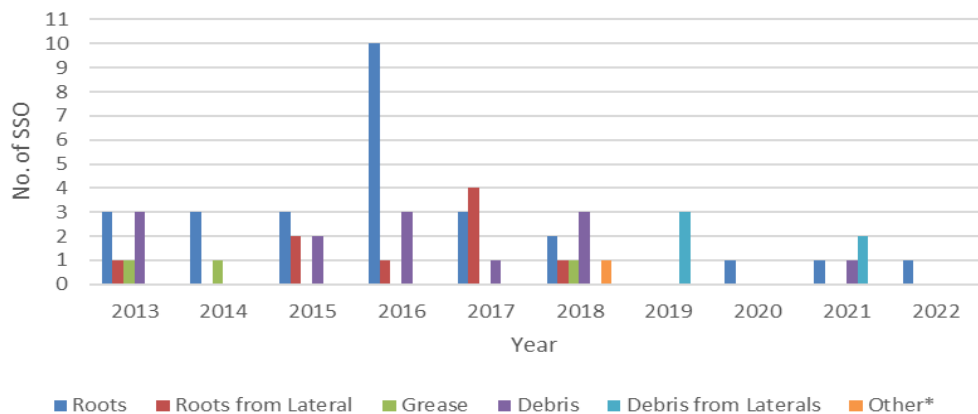






## Section 9. Monitoring Measurement and Plan Modifications

### SSOs and Causes



Year	SSO and SSO Causes						Total No. of SSOs
	Roots	Roots from Lateral	Grease	Debris	Debris from Laterals	Other*	
2013	3	1	1	3	0	0	8
2014	3	0	1	0	0	0	4
2015	3	2	0	2	0	0	7
2016	10	1	0	3	0	0	14
2017	3	4	0	1	0	0	8
2018	2	1	1	3	0	1	8
2019	0	0	0	0	3	0	3
2020	1	0	0	0	0	0	1
2021	1	0	0	1	2	0	4
2022	1	0	0	0	0	0	1
<b>Total</b>	<b>27</b>	<b>9</b>	<b>3</b>	<b>13</b>	<b>5</b>	<b>1</b>	<b>58</b>

### Improvements due to:

Operational efficiencies and improvements

Infrastructure projects

Public and Direct Outreach

### Next Steps

Infrastructure projects

Policy amendments (Ordinance)



# Next Steps

- The City is operating and maintaining the sanitary sewer system at a high level.
- The City will continue to implement programs and projects planned.
- The City will consider policy improvements.
- Return to PWC in August for City Council recommendation.