



**SPECIAL MEETING
OF THE RESTAURANT SUBCOMMITTEE
OF THE ARCHITECTURAL COMMISSION**

City of Beverly Hills
Teleconference / Video Conference Meeting
455 North Rexford Drive
Beverly Hills, CA 90210

**Wednesday, September 22, 2021
11:00 AM**

Pursuant to Executive Order N-25-20, members of the Restaurant Subcommittee of the Architectural Commission and staff may participate in this meeting via a teleconference. In the interest of maintaining appropriate social distancing, members of the public can participate in the teleconference/videoconference by using this link: <https://www.gotomeet.me/CBHCD/subcom> (no password required), or by phone at 1-866-899-4679 or 1-571-317-3116, Access Code #576-863-781. Written comments may be emailed to commentAC@beverlyhills.org and will be read at the meeting.


SPECIAL MEETING AGENDA

1. Public Comment

**2. 339 NORTH BEVERLY DRIVE
Erewhon Beverly Hills (PL2100313)**

Request for approval of an architectural review to allow façade modifications, a Business Identification Sign, an outdoor dining area, and a construction barricade. Pursuant to the provisions set forth in the California Environmental Quality Act (CEQA), the Restaurant Subcommittee of the Architectural Commission will also consider finding the project exempt from further review under CEQA.

3. Adjournment



Mark Odell, Urban Designer

Posted: September 21, 2021



Pursuant to the Americans with Disabilities Act, the City of Beverly Hills will make reasonable efforts to accommodate persons with disabilities. If you require special assistance please call (310) 285-1126 (voice) or (310) 285-6881 (TTY). Providing at least forty-eight (48) hours advance notice will help to ensure availability of services.

EREWHON BEVERLY HILLS

339 N. BEVERLY HILLS DRIVE, CA

rdc.

SHEET CONTENTS:

1	REFERENCE PLOT PLAN
2	FLOOR PLAN & SECTIONS
3	GRADING & DRAINAGE PLAN
4	ROOF PLAN
5	OVERALL ELEVATION
6	STOREFRONT ELEVATION
7	COLOR ELEVATION
8	SIGNAGE DETAILS
9	DOORS & WINDOWS SCHEDULE
10	BARRICADE PLAN
11	BARRICADE DETAILS & GRAPHIC
12	PERSPECTIVE VIEW- 1
13	PERSPECTIVE VIEW- 2
14	PERSPECTIVE VIEW-3
15	MATERIAL & COLOR BOARD
16	SEATING CUT SHEETS
17	STOREFRONT CUT SHEET
18	ENTRY DOOR CUT SHEETS

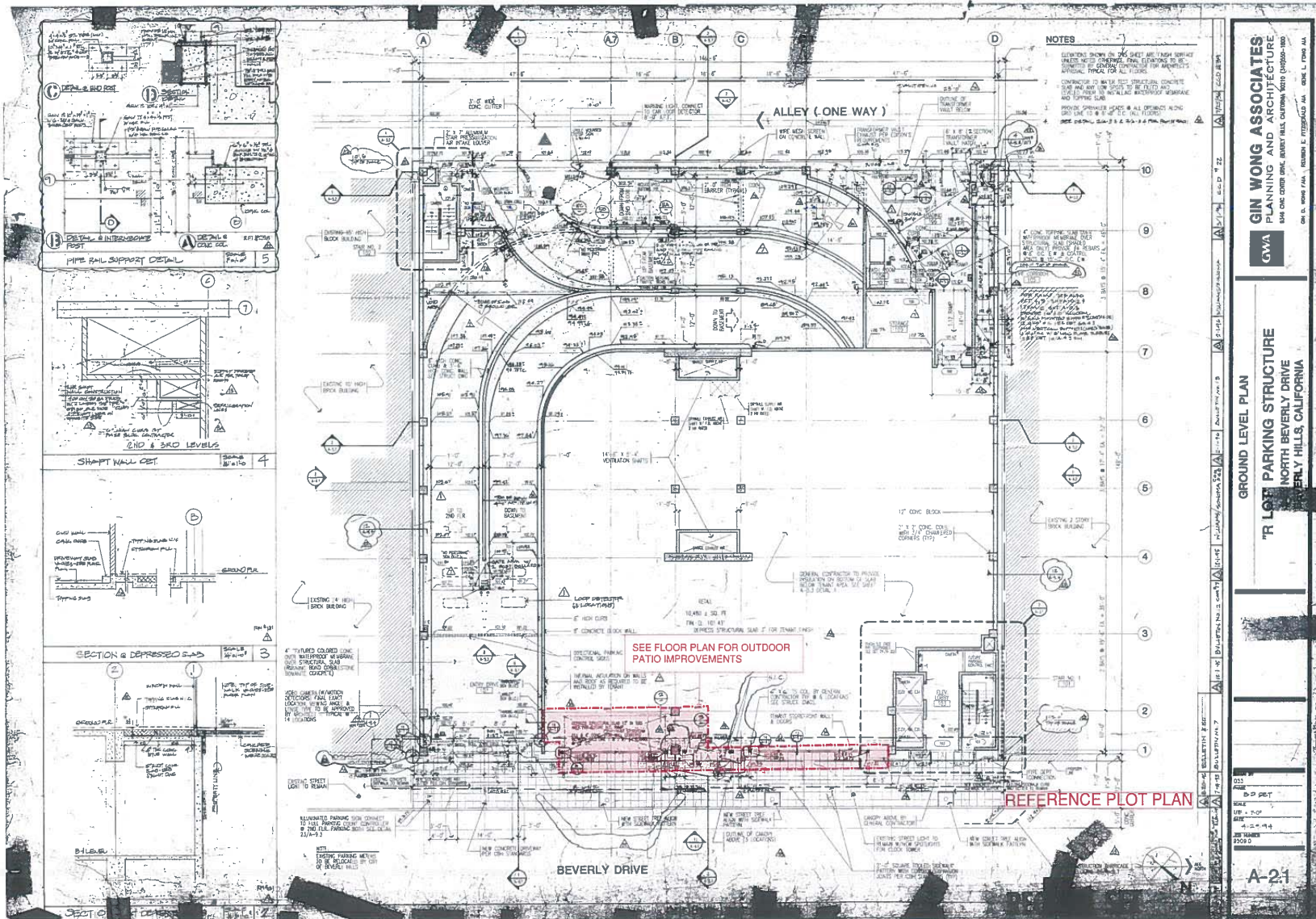
ARCHITECTURAL REVIEW PACKAGE FOR: EXTERIOR FACADE RENOVATION

09/10/21

PROJ. NO. 20.239

rdc.

Long Beach, CA | 562.628.8000 | rdcollaborative.com



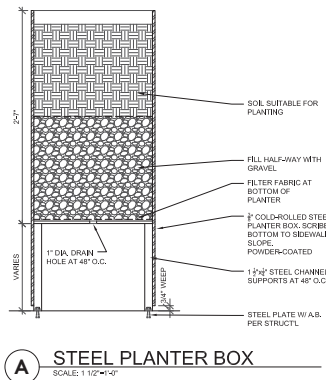
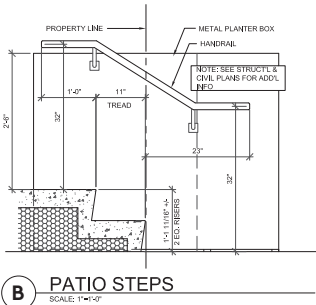
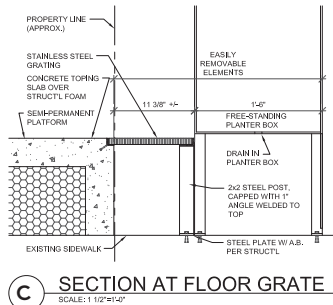
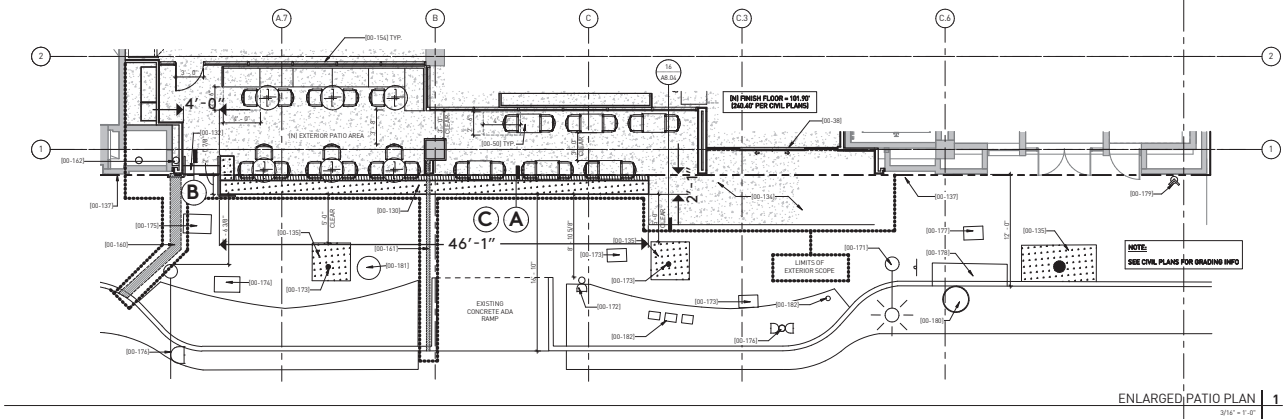
**GIN WONG ASSOCIATES
PLANNING AND ARCHITECTURE**

GIN WONG ASSOCIATES
PLANNING AND ARCHITECTURE
3000 GARDEN GROVE AVENUE, SUITE 200
GARDEN GROVE, CALIFORNIA 92643
TEL: 714.941.8888 FAX: 714.941.8889
WWW.GINWONG.COM

GROUND LEVEL PLAN

"R" LOT PARKING STRUCTURE
NORTH BEVERLY DRIVE
BEVERLY HILLS, CALIFORNIA

A-21



- ### SHEET NOTES
- REFER TO SHEET A-05 FOR GRAPHIC SYMBOLS, ABBREVIATIONS AND GENERAL NOTES.
 - REFER TO SHEET "WINDOW SCHEDULE AND TYPES" AND "STREETVIEW SCHEDULE AND TYPES" FOR WINDOW AND STREETVIEW TYPICAL GLAZING INFORMATION.
 - REFER TO ELECTRICAL DRAWINGS FOR EXTERIOR LIGHT FIXTURES AND OTHER ELECTRICAL DEVICES.
 - ALL SURFACES NOT ELEVATED OR CALLED OUT SHALL MATCH ADJACENT SURFACES.
 - SNAP DRAWINGS FOR ARCHITECTURAL METAL SHALL SHOW DIMENSIONS, WEIGHT AND CONNECTIONS REQUIRED TO ACCOMMODATE THE DIMENSIONS AND SPECIAL FINISHING. PROVIDE A SNAP DRAWING FOR ALL METALS. SUBMIT FOR CONNECTIONS AND DETAILS OF THOSE CONNECTIONS. ALL CONNECTIONS SHALL BE WELDED, GRENEL, SMOOTH AND SNAP-FINISHED AND FINISHED.
 - CONTRACTOR SHALL VERIFY ALL MATERIALS, COLORS AND FINISHES WITH THE ARCHITECT AND PROVIDER. ITEMS SHALL BE DELIVERED TO THE SITE BY THE ARCHITECT FOR CLARIFICATION PRIOR TO BEGINNING WORK OR ORDERING MATERIALS.
 - PAINT EXPOSED CONDUIT TO MATCH ADJACENT SURFACE, UNLESS NOTED OTHERWISE.
 - ALL AREAS WHERE UNLESS PLASTER EXPOSED, CONTRACTOR TO PROVIDE BASE COAT AND MESH-CRACK ISOLATION SYSTEM, REFER TO SPECIFICATION.
 - IF SLAB CONCRETE FINISH FLOOR SHALL BE CLEANED IMMEDIATELY UPON THE COMPLETE FLOOR SHALL BE OF SAFETY GLAZING, REFER TO SPECIFICATION. REFER TO "I" INDICATOR EXTERIOR WINDOW GLAZING.

KEYNOTES

NUMBER	DESCRIPTION
00-109	SEE EXTERIOR WINDOW SCHEDULE
00-110	SEE EXTERIOR WINDOW SCHEDULE
00-111	SEE EXTERIOR WINDOW SCHEDULE
00-112	SEE EXTERIOR WINDOW SCHEDULE
00-113	SEE EXTERIOR WINDOW SCHEDULE
00-114	SEE EXTERIOR WINDOW SCHEDULE
00-115	SEE EXTERIOR WINDOW SCHEDULE
00-116	SEE EXTERIOR WINDOW SCHEDULE
00-117	SEE EXTERIOR WINDOW SCHEDULE
00-118	SEE EXTERIOR WINDOW SCHEDULE
00-119	SEE EXTERIOR WINDOW SCHEDULE
00-120	SEE EXTERIOR WINDOW SCHEDULE
00-121	SEE EXTERIOR WINDOW SCHEDULE
00-122	SEE EXTERIOR WINDOW SCHEDULE
00-123	SEE EXTERIOR WINDOW SCHEDULE
00-124	SEE EXTERIOR WINDOW SCHEDULE
00-125	SEE EXTERIOR WINDOW SCHEDULE
00-126	SEE EXTERIOR WINDOW SCHEDULE
00-127	SEE EXTERIOR WINDOW SCHEDULE
00-128	SEE EXTERIOR WINDOW SCHEDULE
00-129	SEE EXTERIOR WINDOW SCHEDULE
00-130	SEE EXTERIOR WINDOW SCHEDULE
00-131	SEE EXTERIOR WINDOW SCHEDULE
00-132	SEE EXTERIOR WINDOW SCHEDULE
00-133	SEE EXTERIOR WINDOW SCHEDULE
00-134	SEE EXTERIOR WINDOW SCHEDULE
00-135	SEE EXTERIOR WINDOW SCHEDULE
00-136	SEE EXTERIOR WINDOW SCHEDULE
00-137	SEE EXTERIOR WINDOW SCHEDULE
00-138	SEE EXTERIOR WINDOW SCHEDULE
00-139	SEE EXTERIOR WINDOW SCHEDULE
00-140	SEE EXTERIOR WINDOW SCHEDULE
00-141	SEE EXTERIOR WINDOW SCHEDULE
00-142	SEE EXTERIOR WINDOW SCHEDULE
00-143	SEE EXTERIOR WINDOW SCHEDULE
00-144	SEE EXTERIOR WINDOW SCHEDULE
00-145	SEE EXTERIOR WINDOW SCHEDULE
00-146	SEE EXTERIOR WINDOW SCHEDULE
00-147	SEE EXTERIOR WINDOW SCHEDULE
00-148	SEE EXTERIOR WINDOW SCHEDULE
00-149	SEE EXTERIOR WINDOW SCHEDULE
00-150	SEE EXTERIOR WINDOW SCHEDULE
00-151	SEE EXTERIOR WINDOW SCHEDULE
00-152	SEE EXTERIOR WINDOW SCHEDULE
00-153	SEE EXTERIOR WINDOW SCHEDULE
00-154	SEE EXTERIOR WINDOW SCHEDULE
00-155	SEE EXTERIOR WINDOW SCHEDULE
00-156	SEE EXTERIOR WINDOW SCHEDULE
00-157	SEE EXTERIOR WINDOW SCHEDULE
00-158	SEE EXTERIOR WINDOW SCHEDULE
00-159	SEE EXTERIOR WINDOW SCHEDULE
00-160	SEE EXTERIOR WINDOW SCHEDULE
00-161	SEE EXTERIOR WINDOW SCHEDULE
00-162	SEE EXTERIOR WINDOW SCHEDULE
00-163	SEE EXTERIOR WINDOW SCHEDULE
00-164	SEE EXTERIOR WINDOW SCHEDULE
00-165	SEE EXTERIOR WINDOW SCHEDULE
00-166	SEE EXTERIOR WINDOW SCHEDULE
00-167	SEE EXTERIOR WINDOW SCHEDULE
00-168	SEE EXTERIOR WINDOW SCHEDULE
00-169	SEE EXTERIOR WINDOW SCHEDULE
00-170	SEE EXTERIOR WINDOW SCHEDULE
00-171	SEE EXTERIOR WINDOW SCHEDULE
00-172	SEE EXTERIOR WINDOW SCHEDULE
00-173	SEE EXTERIOR WINDOW SCHEDULE
00-174	SEE EXTERIOR WINDOW SCHEDULE
00-175	SEE EXTERIOR WINDOW SCHEDULE
00-176	SEE EXTERIOR WINDOW SCHEDULE
00-177	SEE EXTERIOR WINDOW SCHEDULE
00-178	SEE EXTERIOR WINDOW SCHEDULE
00-179	SEE EXTERIOR WINDOW SCHEDULE
00-180	SEE EXTERIOR WINDOW SCHEDULE
00-181	SEE EXTERIOR WINDOW SCHEDULE
00-182	SEE EXTERIOR WINDOW SCHEDULE
00-183	SEE EXTERIOR WINDOW SCHEDULE
00-184	SEE EXTERIOR WINDOW SCHEDULE
00-185	SEE EXTERIOR WINDOW SCHEDULE
00-186	SEE EXTERIOR WINDOW SCHEDULE
00-187	SEE EXTERIOR WINDOW SCHEDULE
00-188	SEE EXTERIOR WINDOW SCHEDULE
00-189	SEE EXTERIOR WINDOW SCHEDULE
00-190	SEE EXTERIOR WINDOW SCHEDULE
00-191	SEE EXTERIOR WINDOW SCHEDULE
00-192	SEE EXTERIOR WINDOW SCHEDULE
00-193	SEE EXTERIOR WINDOW SCHEDULE
00-194	SEE EXTERIOR WINDOW SCHEDULE
00-195	SEE EXTERIOR WINDOW SCHEDULE
00-196	SEE EXTERIOR WINDOW SCHEDULE
00-197	SEE EXTERIOR WINDOW SCHEDULE
00-198	SEE EXTERIOR WINDOW SCHEDULE
00-199	SEE EXTERIOR WINDOW SCHEDULE
00-200	SEE EXTERIOR WINDOW SCHEDULE

EXTERIOR MATERIAL SCHEDULE

TYPE	NUMBER	DESCRIPTION
EXTERIOR PAINT	00-201	EXTERIOR PAINT POLYURETHANE
EXTERIOR TILE	00-202	2" x 2" CERAMIC ENAMEL GLAZED TILE TO MATCH GREEN TILE 00-001-001

GRAPHICS LEGEND

MATERIAL	DESCRIPTION
00-203	MATERIAL TAGS SEE EXTERIOR ELEVATIONS FOR COLOR SCHEDULE
00-204	00-204
00-205	00-205
00-206	00-206
00-207	00-207
00-208	00-208
00-209	00-209
00-210	00-210
00-211	00-211
00-212	00-212
00-213	00-213
00-214	00-214
00-215	00-215
00-216	00-216
00-217	00-217
00-218	00-218
00-219	00-219
00-220	00-220
00-221	00-221
00-222	00-222
00-223	00-223
00-224	00-224
00-225	00-225
00-226	00-226
00-227	00-227
00-228	00-228
00-229	00-229
00-230	00-230
00-231	00-231
00-232	00-232
00-233	00-233
00-234	00-234
00-235	00-235
00-236	00-236
00-237	00-237
00-238	00-238
00-239	00-239
00-240	00-240
00-241	00-241
00-242	00-242
00-243	00-243
00-244	00-244
00-245	00-245
00-246	00-246
00-247	00-247
00-248	00-248
00-249	00-249
00-250	00-250
00-251	00-251
00-252	00-252
00-253	00-253
00-254	00-254
00-255	00-255
00-256	00-256
00-257	00-257
00-258	00-258
00-259	00-259
00-260	00-260

rdc.
 241 East Third Street
 Long Beach, CA 90802
 562.628.8000
 rdcollaborative.com

EREWHON
 1234 N. BULLY BLVD. STE. 100
 LOS ANGELES, CA 90027

EREWHON
 TENANT IMPROVEMENT

REVISIONS

NO.	DATE	DESCRIPTION

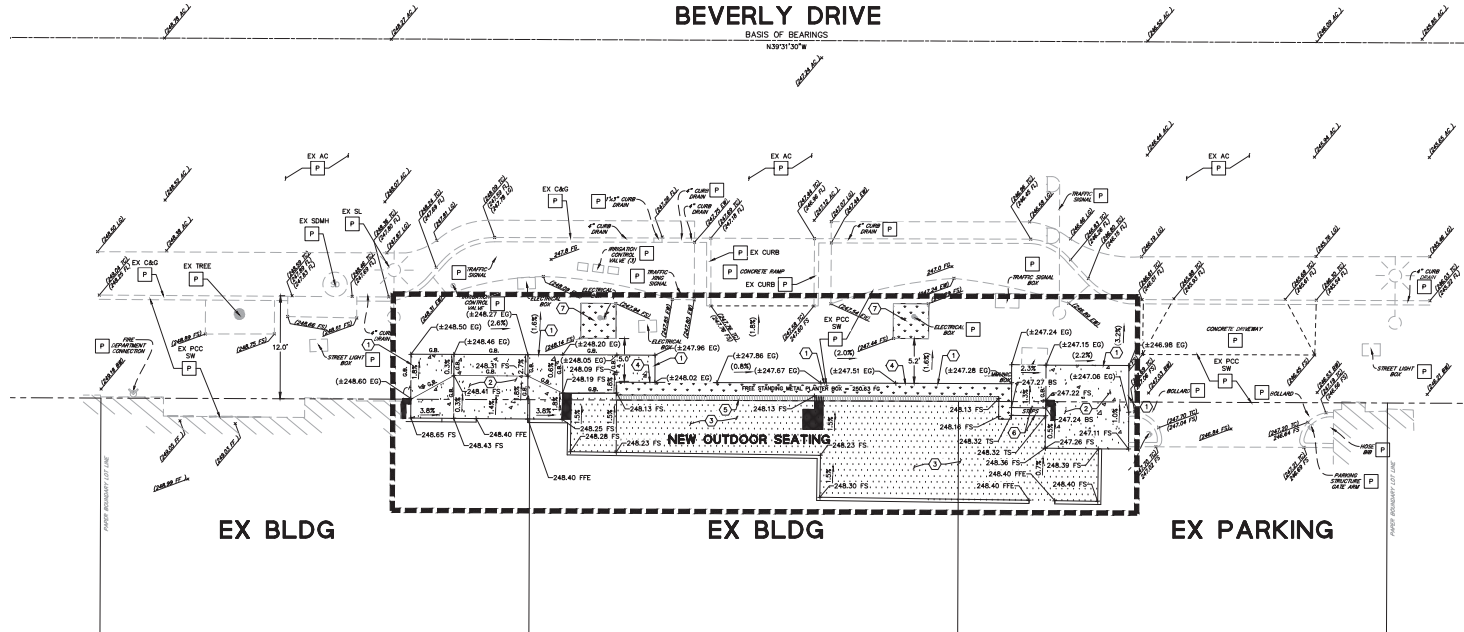
PROJECT NUMBER: 26-239
ENLARGED PATIO PLAN AND ELEVATION

A6.14

CITY RESUBMITTAL: 08/30/2021

BEVERLY DRIVE

BASIS OF BEARINGS
N39°10'30"



EX BLDG

EX BLDG

EX PARKING

ABBREVIATIONS:

- AC ASPHALT TO CONCRETE
- BS BOTTOM OF STEP
- CL CENTERLINE
- C&G CURB & GUTTER
- FEE FINISHED FLOOR ELEVATION
- FG FINISHED GRADE
- FS FINISHED SURFACE
- FL FINISH LINE
- RV RAMP
- LI LINE
- SDMH STORM DRAIN MANHOLE
- TC TOP FACE OF CURB
- TS TOP OF STEP

GRADING & DRAINAGE CONSTRUCTION NOTES:

- 1 PROTECT IN PLACE EXISTING IMPROVEMENTS
- 2 SAWCUT AND MATCH EXISTING PAVEMENT
- 3 NEW PCC SIDEWALK PER CITY OF BEVERLY HILLS STD. BH 105
- 4 NEW OUTDOOR SEATING FINISH PER STRUCTURAL PLANS
- 5 NEW RAISED PLANTER PER ARCHITECTURAL PLANS
- 6 NEW 12-INCH REMOVAL TRENCH DRAIN GRATE PER ARCHITECTURAL PLANS
- 7 NEW STAIRS PER ARCHITECTURAL PLANS
- 8 NEW TREE WELL GRATE PER ARCHITECTURAL PLANS

LEGEND:

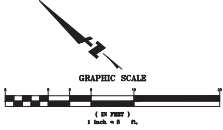
- PROPOSED FLOW DIRECTION
- PROJECT LIMITS
- ELEVATION CONTOUR
- PROPOSED TRENCH DRAIN
- STREET CENTERLINE
- PAPER BOUNDARY
- RIGHT-OF-WAY LINE
- BUILDING PERIMETER
- STREET LIGHT
- SIGN
- STORM DRAIN MANHOLE
- TREE TRUNK
- DIAMETER AND TREE TYPE

GRADING NOTES:

1. ALL EXISTING UTILITY COVERS WITHIN LIMIT OF WORK ARE TO BE ADJUSTED TO GRADES SHOWN ON PLAN.
2. FOR WALKS IN ADA ACCESSIBLE AREAS, CROSS SLOPES SHOULD NOT EXCEED 1:8% GRADE.
3. REFER TO ARCHITECTURAL PLANS FOR ARCHITECTURAL INFORMATION.
4. CONTRACTOR TO CONTACT USA AT (800) 247-3600 AT LEAST 48 HOURS PRIOR TO ANY EXCAVATION, UTILITY REMOVAL AND RELOCATION.

DRAINAGE NOTES:

1. CONTRACTOR SHALL VERIFY EXISTING STORM DRAIN INVERTS PRIOR TO CONSTRUCTION AND SHALL NOTIFY CIVIL ENGINEER OF ANY ELEVATION DISCREPANCIES BASED ON THEIR FINDINGS.
2. EXISTING UTILITY DATA SHOWN ON THESE DRAWINGS ARE PER RECORD DRAWINGS. THE TYPE AND LOCATION OF THE UTILITIES SHOWN ON THESE DRAWINGS MAY HAVE CHANGED AND THERE MAY BE ADDITIONAL EXISTING UTILITIES NOT SHOWN.
3. ALL UTILITIES SHOWN ON THIS PLAN ARE PRELIMINARY UNTIL VERIFIED BY UTILITY AGENCIES.
4. THE CONTRACTOR SHALL COMMUNICATE DIRECTLY WITH THE UTILITY COMPANIES WHEN REQUESTING FACILITIES TO BE LOCATED, MARKED OR REPAIRED. NO EXCAVATIONS ARE PERMITTED UNTIL ALL UTILITIES ARE MARKED.
5. APPROVAL OF THIS PLAN BY CITY ENGINEER DOES NOT CONSTITUTE A REPRESENTATION OF THE ACCURACY OF THE LOCATION OF OR THE EXISTENCE OR NON-EXISTENCE OF ANY UNDERGROUND UTILITY PIPES OR STRUCTURES WITHIN THE LIMITS OF THE PROJECT. IT SHALL BE THE RESPONSIBILITY OF THE CONTRACTOR TO DETERMINE THE TRUE LOCATION OF ALL PUBLIC AND PRIVATE UTILITIES, AND FOR MAINTAINING SERVICE TO ANY INDIVIDUAL PROPERTY WHOSE UTILITY SERVICE MAY BE DAMAGED BY THE CONTRACTOR IN THE PERFORMANCE OF THE WORK.
6. IT SHALL BE THE CONTRACTOR'S RESPONSIBILITY TO VERIFY THE LOCATION OF ALL EXISTING UNDERGROUND UTILITIES (BY NOTICING OR OTHER MEANS) AND TO COORDINATE THE RELOCATION OF ANY EXISTING UTILITIES AS DEEMED NECESSARY BY THE PROPOSED IMPROVEMENT. CONTRACTOR SHALL NOTIFY UNDERGROUND SERVICE ALERT (USA) 1-800-277-8689 AT LEAST 72 HOURS PRIOR TO ANY EXCAVATION TO LOCATE EXISTING UTILITIES.



rdc.

245 East Third Street
Long Beach, Ca 90802
6 562.628.8000
rdcollaborative.com



4075 MACARTHUR CT
SUITE 400
BEVERLY BEACH, CA 92606
(949) 436-8400
www.bkf.com



EREWON

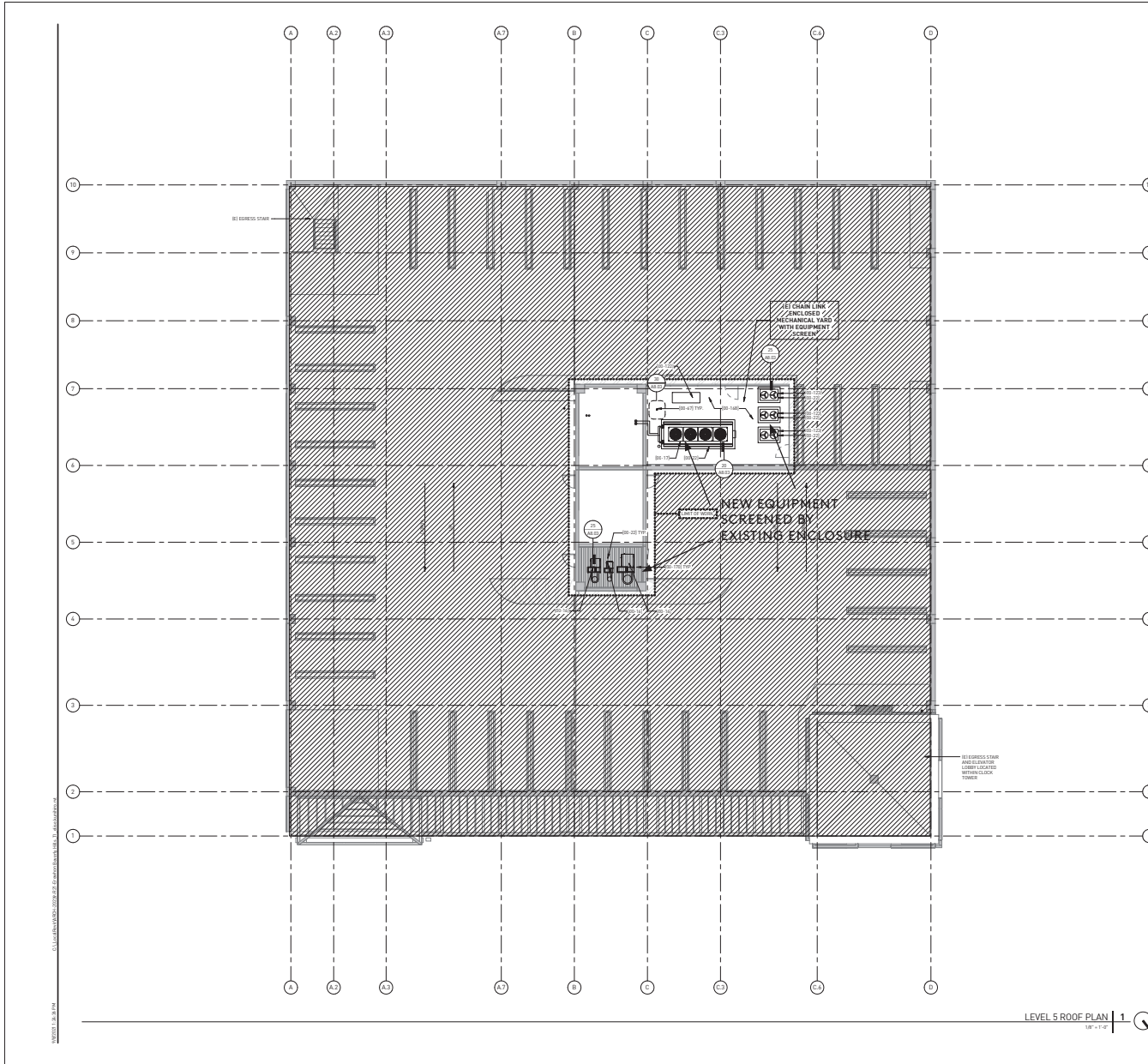
EREWON
TENANT IMPROVEMENT
325 N. BEVERLY BLVD.
BEVERLY HILLS, CA 90210

REVISIONS	DATE

PROJECT NUMBER: 210965
GRADING AND DRAINAGE PLAN

C100

CITY SUBMITTAL: 06/30/2021



SHEET NOTES

1. REFER TO SHEET AIDS FOR GRAPHIC SYMBOLS, ABBREVIATIONS AND GENERAL NOTES.
2. REF. TO SHEET DETAILS - THERMAL AND MOISTURE PROTECTION FOR GENERAL ROOF DET.
3. ROOFING CLASSIC AS APPLICABLE ROOF PROTECTION.
4. ALL ROOF ELEVATIONS ARE GIVEN FROM REFERENCE EARTH.
5. ALL ROOF SLOPES SHALL BE 1/4" PER FOOT MINIMUM, INCLUDING SLOPES AT VALLEYS.
6. ROOFING CONTRACTOR SHALL CONFIRM THAT ALL AREAS OF THE ROOF ARE PROVIDED WITH PROPER DRAINAGE.
7. ROOF VENTS SHALL BE LOCATED 10 FEET O.C. MINIMUM TO 20 FEET O.C. MAX. TOP 1/4" O.C. ONE SET OF INTERFLOOR PENETRATION AREAS PROVIDED FOR EVERY 10' O.C. OF VENT COVERAGE.
8. ALL ROOF PENS FOR PLUMBING, VENTS, SLEEVES, CONDENSATE, ETC. SHALL BE FLASHED OVER ROOF PEN VENT AND PENETRATIONS. FLASHING SHALL BE PERFORMED AT LEAST 18" FEET HORIZONTAL OR 3" FEET ABOVE OUTSIDE AIR INTAKE OF THE A.U. UNIT OR MAKE-UP AIR UNIT.
9. CONTRACTOR SHALL BE RESPONSIBLE FOR COORDINATION OF THE SIZE AND LOCATION OF ROOF PENETRATIONS, VENTS, SLEEVES, PLUMBING, PRE-FABRICATED COLUMNS, ETC. COORDINATE USE OF MECHANICAL PENETRATION AND GUTTER DRAINAGE SYSTEMS AND SPECTROSCOPY/MONITORING PLANS AND COORDINATE THE LOCATION OF THE POWER.
10. ALL CURB PARAPETS, CURB COLLAR PARAPETS OR OTHER RESTRICTIONS SHALL NOT BE INSTALLED ON THE ROOF OF ANY BUILDING IN SUCH A MANNER AS TO OBSTRUCT THE PRESCRIBED ACCESS OF ESCAPE TO THE ROOF OF THE OCCUPANCY PARAPETS SHALL NOT EXCEED THE HEIGHT PROVIDED FROM THE TOP OF THE PARAPET TO THE ROOF SURFACE EXCEPT THOSE WHICH EXCEED THE CODE REQUIREMENTS.

NOTE:
ALL ELASTOMERIC ROOFING FINISH TO BE COMPLETED BY LANDLORD'S DESIGNATED CONTRACTOR.

KEYNOTES

NUMBER	DESCRIPTION
00-113	SEE MECHANICAL PLAN
00-114	REFER TO THE MECHANICAL PLAN FOR EQUIPMENT AND PRELIMINARY LAYOUT.
00-115	REFER TO THE MECHANICAL PLAN FOR THE MECHANICAL VAULT.
00-116	MECHANICAL VAULTS SHALL BE CONFORMED TO ALL APPLICABLE CODES.
00-117	ALL MECHANICAL VAULTS SHALL BE PROTECTED BY THE ROOFING CONTRACTOR.
00-118	ALL MECHANICAL VAULTS SHALL BE PROTECTED BY THE ROOFING CONTRACTOR.
00-119	ALL MECHANICAL VAULTS SHALL BE PROTECTED BY THE ROOFING CONTRACTOR.
00-120	ALL MECHANICAL VAULTS SHALL BE PROTECTED BY THE ROOFING CONTRACTOR.
00-121	ALL MECHANICAL VAULTS SHALL BE PROTECTED BY THE ROOFING CONTRACTOR.
00-122	ALL MECHANICAL VAULTS SHALL BE PROTECTED BY THE ROOFING CONTRACTOR.

GRAPHICS LEGEND

- ◊ ELECTRIC COLUMN
- FLOOR DRAIN - SEE PLUMBING, REFRIGERATION, AND MECHANICAL PLANS
- MECH VAULT EMPLOYED FLOOR DRAIN - TOP OF DRAIN TO BE COORDINATED WITH FLOORING - SEE PLUMBING, REFRIGERATION, AND MECHANICAL PLANS
- ▨ RT WALLS TO REMAIN - O.C. TO PROTECT IN PLACE
- ▨ RT WALLS - SEE PARTITION PLAN
- ▨ ROOF FIN - SEE OWNER SCHEDULE ON A4.11
- DOWN CURB OR COLLAR BEARING - PROVIDE CHANNELS FOR STEEL PLATES AT THE BOTTOM OF ALL COLLAR AND FREESTER DOORS.
- ◆ RAMP OR RISE
- ◆ ROOFING TILES
- ▨ MATCH INDICATED AREA NOT IN SCOPE OF WORK

LEVEL 5 ROOF PLAN 1
1/8" = 1'-0"

rdc.

245 East Third Street
Long Beach, CA 90802
562.628.8000
rdcollaborative.com

EREWHON
L.A. OFFICE
LOS ANGELES, CA 90028

EREWHON
TENANT IMPROVEMENT
155 W. 15th St. #103
BERKELEY, CA 94709

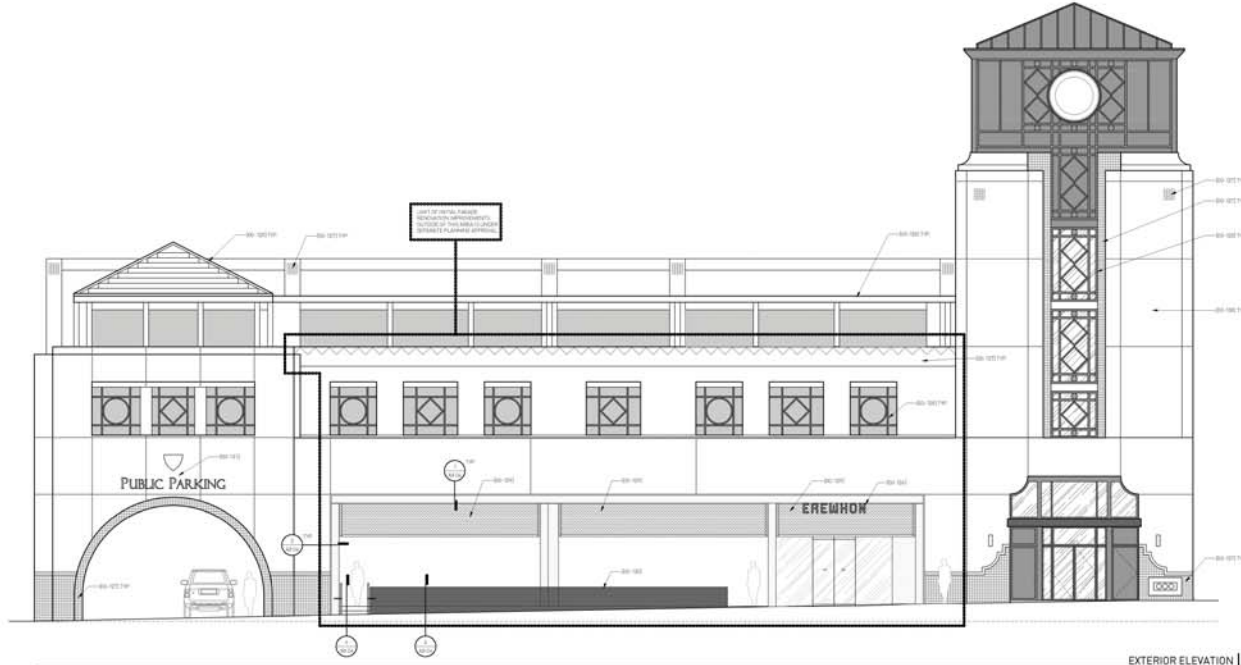
REVISIONS

A	DATE

PROJECT NUMBER: 26-239

ROOF PLAN -
LEVEL 5
A1.05

CITY RESUBMITTAL: 08/30/2021



EXTERIOR ELEVATION 2
SCALE: 1/8" = 1'-0"

SHEET NOTES

- 1. REFER TO SET AS FOR SHOWN SYMBOLS, ABBREVIATIONS AND GENERAL NOTES.
- 2. REFER TO SET FOR WINDOW SCHEDULES AND NOTES AND TO EXISTING WINDOW SCHEDULE AND SPEC FOR WINDOW AND GLAZING TYPES AND GLAZING INFORMATION.
- 3. REFER TO EXISTENTIAL DRAWINGS FOR EXISTING LOT PATIOLAS AND OTHER EXISTENTIAL CONDITIONS.
- 4. ALL CONCRETE SHALL BE CAST IN PLACE UNLESS OTHERWISE NOTED.
- 5. UNLESS OTHERWISE SPECIFIED, ALL MATERIALS SHALL BE MANUFACTURED IN THE UNITED STATES AND SHALL BE OF THE HIGHEST QUALITY AVAILABLE. MATERIALS SHALL BE OF THE HIGHEST QUALITY AVAILABLE. MATERIALS SHALL BE OF THE HIGHEST QUALITY AVAILABLE.
- 6. CONTRACTOR SHALL VERIFY ALL MATERIALS AND FINISHES SHOWN ON THE EXISTING DRAWINGS ARE AVAILABLE AND SHALL BE OF THE HIGHEST QUALITY AVAILABLE. MATERIALS SHALL BE OF THE HIGHEST QUALITY AVAILABLE.
- 7. MEAN DIMENSIONS ONLY TO MATCH EXISTING UNLESS OTHERWISE NOTED.
- 8. ALL UNLESS OTHERWISE SPECIFIED, CONCRETE SHALL BE TYPE II, 4000 PSI AND SHALL BE OF THE HIGHEST QUALITY AVAILABLE.
- 9. ALL UNLESS OTHERWISE SPECIFIED, ALL DIMENSIONS SHALL BE TO FACE UNLESS OTHERWISE NOTED.

KEYNOTES

NUMBER	DESCRIPTION
001	CONCRETE
002	BRICK
003	GLASS
004	IRON
005	WOOD
006	PAINT
007	ROOFING
008	MECHANICAL
009	ELECTRICAL
010	PLUMBING

EXTERIOR MATERIAL SCHEDULE

TYPE	NUMBER	DESCRIPTION
CONCRETE	001	CONCRETE
GLASS	003	GLASS
IRON	004	IRON
WOOD	005	WOOD
PAINT	006	PAINT
ROOFING	007	ROOFING
MECHANICAL	008	MECHANICAL
ELECTRICAL	009	ELECTRICAL
PLUMBING	010	PLUMBING

GRAPHICS LEGEND

CONCRETE	MATERIAL, SEE SEE EXISTING
BRICK	EXISTING MATERIAL (SEE EXISTING)
GLASS	GLASS
IRON	IRON
WOOD	WOOD
PAINT	PAINT
ROOFING	ROOFING
MECHANICAL	MECHANICAL
ELECTRICAL	ELECTRICAL
PLUMBING	PLUMBING



245 East Third Street
Long Beach, Ca 90802
562.628.8000
rdcollaborative.com

EREWHON
 1225 N. HAVES
 LOS ANGELES, CA 90012

EREWHON
 TENANT IMPROVEMENT
 1225 N. HAVES
 LOS ANGELES, CA 90012

REVISIONS	DATE

PROJECT NUMBER: 20-239
ENLARGED PATIO
PLAN AND
ELEVATION

A6.14

CITY RESUBMITTAL: 08/30/2021



SHEET NOTES

1. REFER TO SHEET A603 FOR SHIELDING, DIMENSIONS AND GENERAL NOTES.
2. REFER TO SHEET A604 FOR ELECTRICAL AND MECHANICAL (HVAC) INFORMATION, DIMENSIONS AND GENERAL NOTES FOR WIRE AND DUCT INFORMATION.
3. REFER TO ELECTRICAL DRAWINGS FOR TYPICAL LIGHT FIXTURES AND OTHER ELECTRICAL DEVICES.
4. ALL SURFACES NOT INDICATED SHALL HAVE AN LEAST 1/8" SURFACE FINISH.
5. REFER TO SHEET A605 FOR ARCHITECTURAL, METAL, WOOD, GRANITE, GLASS, AND STONE FINISHES TO BE USED TO MATCH THE QUALITY AND DETAILING OF THE EXISTING BUILDING. ALL MATERIALS SHALL BE MATCHED TO THE EXISTING BUILDING AND FINISHES TO BE USED TO MATCH THE EXISTING BUILDING.
6. REFER TO SHEET A606 FOR MATERIALS, DIMENSIONS AND GENERAL NOTES.
7. REFER TO SHEET A607 FOR MATERIALS, DIMENSIONS AND GENERAL NOTES.
8. ALL WORK SHALL BE SUBJECT TO THE APPROVAL OF THE LOCAL BUILDING DEPARTMENT AND ALL OTHER APPLICABLE LOCAL ORDINANCES.
9. ALL WORK SHALL BE SUBJECT TO THE APPROVAL OF THE LOCAL BUILDING DEPARTMENT AND ALL OTHER APPLICABLE LOCAL ORDINANCES.

KEYNOTES

NUMBER	DESCRIPTION
00-00	NO KEYNOTE
00-01	NO KEYNOTE
00-02	NO KEYNOTE
00-03	NO KEYNOTE
00-04	NO KEYNOTE
00-05	NO KEYNOTE
00-06	NO KEYNOTE
00-07	NO KEYNOTE
00-08	NO KEYNOTE
00-09	NO KEYNOTE
00-10	NO KEYNOTE
00-11	NO KEYNOTE
00-12	NO KEYNOTE
00-13	NO KEYNOTE
00-14	NO KEYNOTE
00-15	NO KEYNOTE
00-16	NO KEYNOTE
00-17	NO KEYNOTE
00-18	NO KEYNOTE
00-19	NO KEYNOTE
00-20	NO KEYNOTE
00-21	NO KEYNOTE
00-22	NO KEYNOTE
00-23	NO KEYNOTE
00-24	NO KEYNOTE
00-25	NO KEYNOTE
00-26	NO KEYNOTE
00-27	NO KEYNOTE
00-28	NO KEYNOTE
00-29	NO KEYNOTE
00-30	NO KEYNOTE
00-31	NO KEYNOTE
00-32	NO KEYNOTE
00-33	NO KEYNOTE
00-34	NO KEYNOTE
00-35	NO KEYNOTE
00-36	NO KEYNOTE
00-37	NO KEYNOTE
00-38	NO KEYNOTE
00-39	NO KEYNOTE
00-40	NO KEYNOTE
00-41	NO KEYNOTE
00-42	NO KEYNOTE
00-43	NO KEYNOTE
00-44	NO KEYNOTE
00-45	NO KEYNOTE
00-46	NO KEYNOTE
00-47	NO KEYNOTE
00-48	NO KEYNOTE
00-49	NO KEYNOTE
00-50	NO KEYNOTE
00-51	NO KEYNOTE
00-52	NO KEYNOTE
00-53	NO KEYNOTE
00-54	NO KEYNOTE
00-55	NO KEYNOTE
00-56	NO KEYNOTE
00-57	NO KEYNOTE
00-58	NO KEYNOTE
00-59	NO KEYNOTE
00-60	NO KEYNOTE
00-61	NO KEYNOTE
00-62	NO KEYNOTE
00-63	NO KEYNOTE
00-64	NO KEYNOTE
00-65	NO KEYNOTE
00-66	NO KEYNOTE
00-67	NO KEYNOTE
00-68	NO KEYNOTE
00-69	NO KEYNOTE
00-70	NO KEYNOTE
00-71	NO KEYNOTE
00-72	NO KEYNOTE
00-73	NO KEYNOTE
00-74	NO KEYNOTE
00-75	NO KEYNOTE
00-76	NO KEYNOTE
00-77	NO KEYNOTE
00-78	NO KEYNOTE
00-79	NO KEYNOTE
00-80	NO KEYNOTE
00-81	NO KEYNOTE
00-82	NO KEYNOTE
00-83	NO KEYNOTE
00-84	NO KEYNOTE
00-85	NO KEYNOTE
00-86	NO KEYNOTE
00-87	NO KEYNOTE
00-88	NO KEYNOTE
00-89	NO KEYNOTE
00-90	NO KEYNOTE
00-91	NO KEYNOTE
00-92	NO KEYNOTE
00-93	NO KEYNOTE
00-94	NO KEYNOTE
00-95	NO KEYNOTE
00-96	NO KEYNOTE
00-97	NO KEYNOTE
00-98	NO KEYNOTE
00-99	NO KEYNOTE
00-100	NO KEYNOTE

EXTERIOR MATERIAL SCHEDULE

TYPE	NUMBER	DESCRIPTION
EXTERIOR PAINT		NO KEYNOTE
EXTERIOR TILE		NO KEYNOTE

GRAPHICS LEGEND

MATERIAL	MATERIAL, SEE SEE EXTENSION
OPEN AIR	OPEN AIR
PLAN/SECTION	PLAN/SECTION
	NOT INDICATED AREA NOT IN SCOPE OF WORK

rdc.
281 East Third Street
Long Beach, CA 90802
1.562.628.8000
rdcollaborative.com

EREWHON
JULIE 11TH ST.
LOS ANGELES, CA 90015

**EREWHON
TENANT IMPROVEMENT**
320 N BEVELER AVE
BOULEVARD, CA 90015

REVISIONS

NO.	DATE	DESCRIPTION

PROJECT NUMBER: 20-239

WALL SIGN

1 Set of white acrylic back lit letters mounted on raceway (see below)

Returns to be 3" deep

Signs to be illuminated with white LEDs

Signs shall be U/L listed and approved

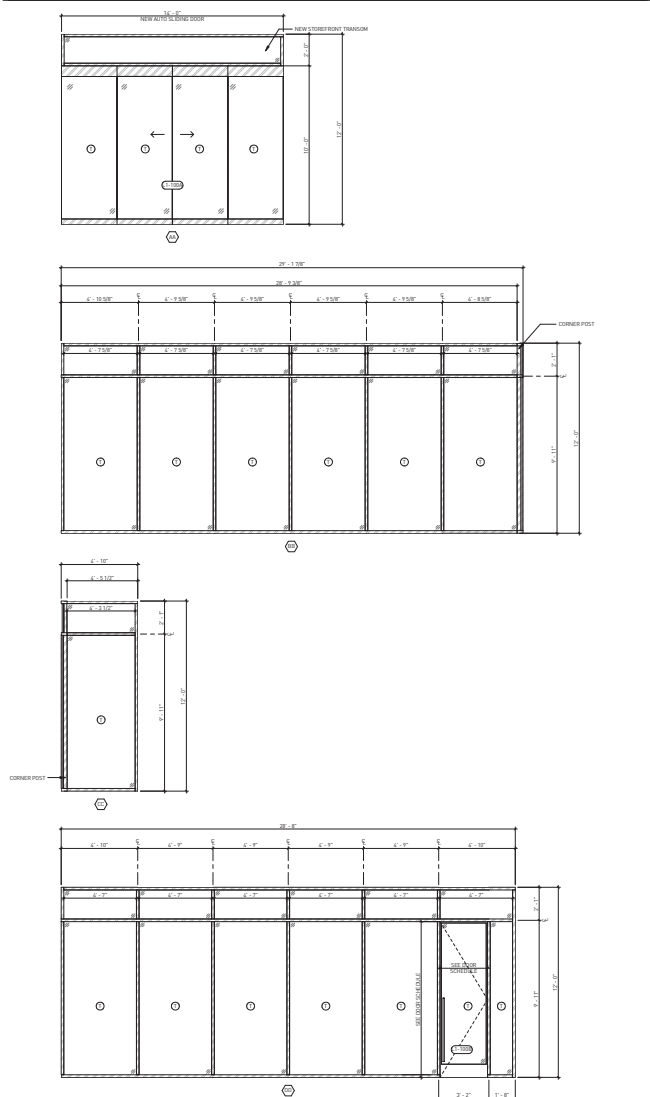
10 sq. ft.
sign area



STOREFRONT SCHEDULE

Table with columns: TYPE, MATERIAL, FINISH, COLOR, GLAZING, FIRE RATINGS, HEAD, JAMB, REIN, HORIZONTAL MULLION, VERTICAL MULLION, REMARKS.

STOREFRONT TYPES

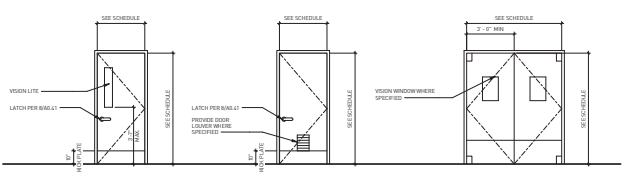


DOOR SCHEDULE

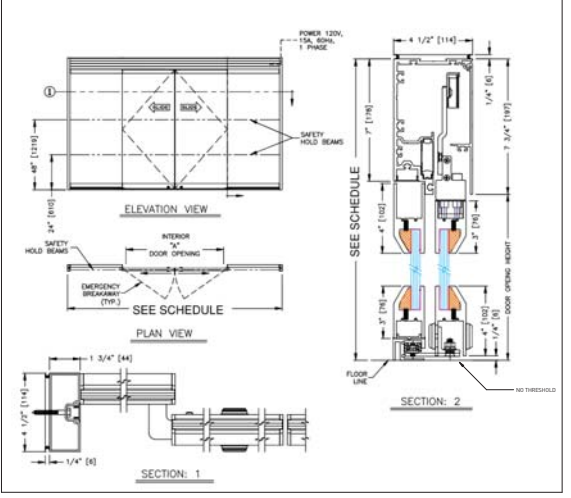
Table with columns: NO., LOCATION, TYPE, GL., SWL, HAIL, LANS, GLAZ., HURST, THRESHOLD, HAIL, FINISH, REIN, PILL, FIRE RATINGS, REMARKS.

SEE SPECIFICATIONS FOR CURTAIN WALLS

DOOR TYPES



SERIES 5200 ALL GLASS SLIDING DOORS



SHEET NOTES

- 1. REFER TO SHEET 08/30 FOR GRAPHIC SYMBOLS, ABBREVIATIONS AND GENERAL NOTES.
2. REFER TO SHEETS "FLOOR PLAN" FOR DOOR NUMBER CALLOUTS.
3. WITHIN 4" H.T. HEIGHT DET. DOORWAYS TO COMPLY WITH GOVERNING CODE HEIGHTS...

REMARKS

- A. ALL DOOR PARTS SHALL BE COORDINATED ASTRAEGALS WITH METAL T.Y.
B. DOOR SHALL BE SELF CLOSING AND SELF LATCHING.
C. DOOR SHALL HAVE METAL THRESHOLDS AND WEARLEAS STOPPING.

LEGEND

Table with columns: A.B.D., ALUM., CLE., etc. and corresponding material descriptions like METAL, METAL FINISH, etc.



345 East Third Street Long Beach, Ca 90802



240 E. 11TH ST. LOS ANGELES, CA 90015

EREWON TENANT IMPROVEMENT

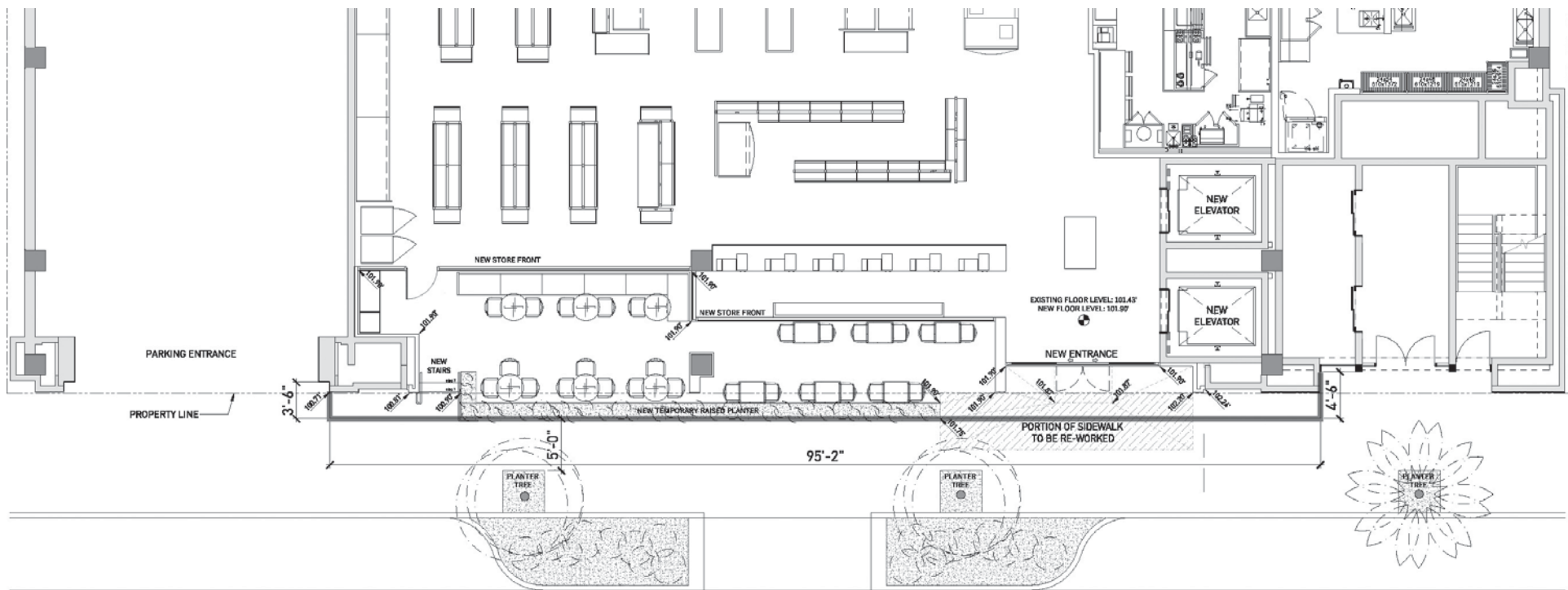
Table with columns: REVISIONS, A, B, etc. and DATE.

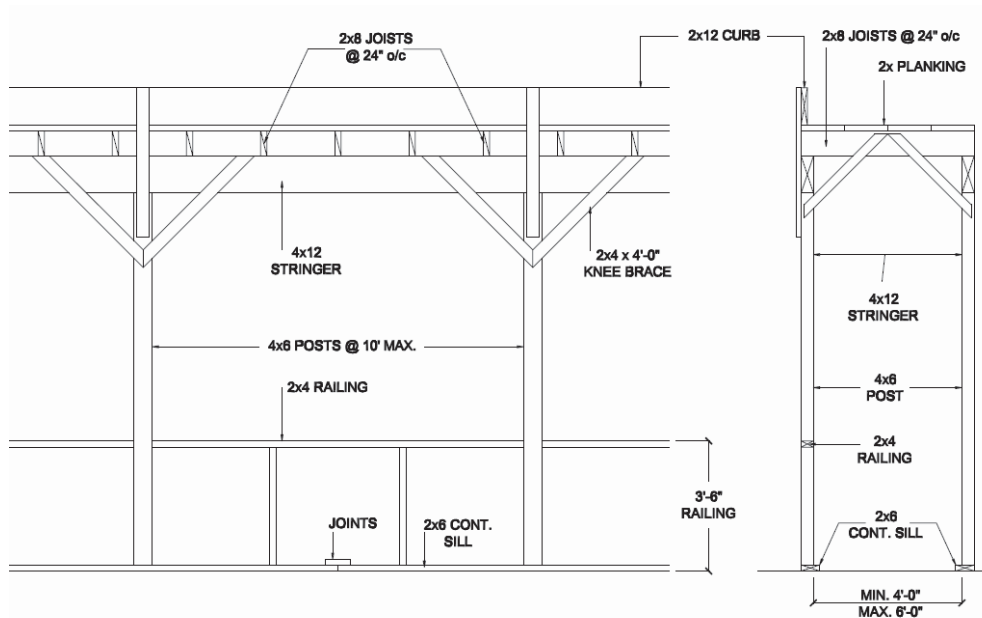
PROJECT NUMBER: 20-239

DOOR AND STOREFRONT SCHEDULE

A9.11

CITY RESUBMITTAL: 08/30/2021





ANCHORAGE INTO SIDEWALK NOT ALLOWED
 Beverly Hills Standard for Barricade



Barricade Graphic









WT-01

MT-01

WP-02

FA-01

MT-01

WP-01



WP-01

EXISTING PLASTER/
PAINT AT BUILDING



WP-02

NEW PLASTER
FAUX CONCRETE



WT-01

NEW 4" X 4"
EXTERIOR
CERAMIC TILE



FA-01

AWNING FABRIC
SUNBRELLA - "SILICA SILVER"



MT-02

ANTHRACITE FACTORY
PAINTED DARK GRAY
FOR STOREFRONT
AND AWNING PROFILE



MT-01

DARK GREEN
POWDER COAT
FOR PLANTER



WD-01

DARK GRAY STAINED
THERMO ASHWOOD
AT FIXED BENCH AT
TERRACE

Darwin #529

Designer: Lucidi / Pevere

DETAILS



H	BW	TS	Lbs
29"	20"	32" Sq"	35

Download Collection Brochure [HERE](#)

Outdoor/Indoor Tilt Top Nesting Table

E-Coated powder coat finish

Top Thickness: 3/4"

Top: Solid Steel

Base: Solid Steel

Assembly Required: Yes

SHIPPING

Master Pack Quantity: 1

Master Pack Dimensions: 33"x5"x33"

Master Pack Weight: 40 Lbs.

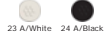
Master Cartons/Pallet: 15

Freight Class: 70

FOB: PA 17042



Quick Ship Finishes:



Special Order Ship Finishes:



emuamericas LLC
T: (800) 726-0368
emuamericas.com



ACCESSIBLE TABLE

Miky #637

Designer: Florent Collier

DETAILS



H	W	D	SH	Lbs
30.5"	22"	21.5"	18"	13.5

Outdoor/Indoor Stacking Side Chair

E-coated powder coat finish

Frame: Tubular Steel

Seat/Back: Solid Steel

Stackability: 8

SHIPPING

Master Pack Quantity: 4

Master Pack Dimensions: 29.5"x23"x36"

Master Pack Weight: 65 Lbs.

FOB: PA 17042



Quick Ship Finishes:



Special Order Ship Finishes:



emuamericas LLC
T: (800) 726-0368
emuamericas.com



Darwin #849

Designer: Lucidi / Pevere

DETAILS



H	TS	Lbs
29"	32" Dia"	32.5

Download Collection Brochure [HERE](#)

Outdoor/Indoor Tilt Top Nesting Table

E-Coated powder coat finish

Top Thickness: 3/4"

Top: Solid Steel

Base: Solid Steel

Assembly Required: Yes

SHIPPING

Master Pack Quantity: 1

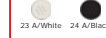
Master Pack Dimensions: 6.5"x32.5"x32.5"

Master Pack Weight: 37 Lbs.

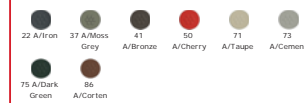
FOB: PA 17042



Quick Ship Finishes:



Special Order Ship Finishes:



emuamericas LLC
T: (800) 726-0368
emuamericas.com

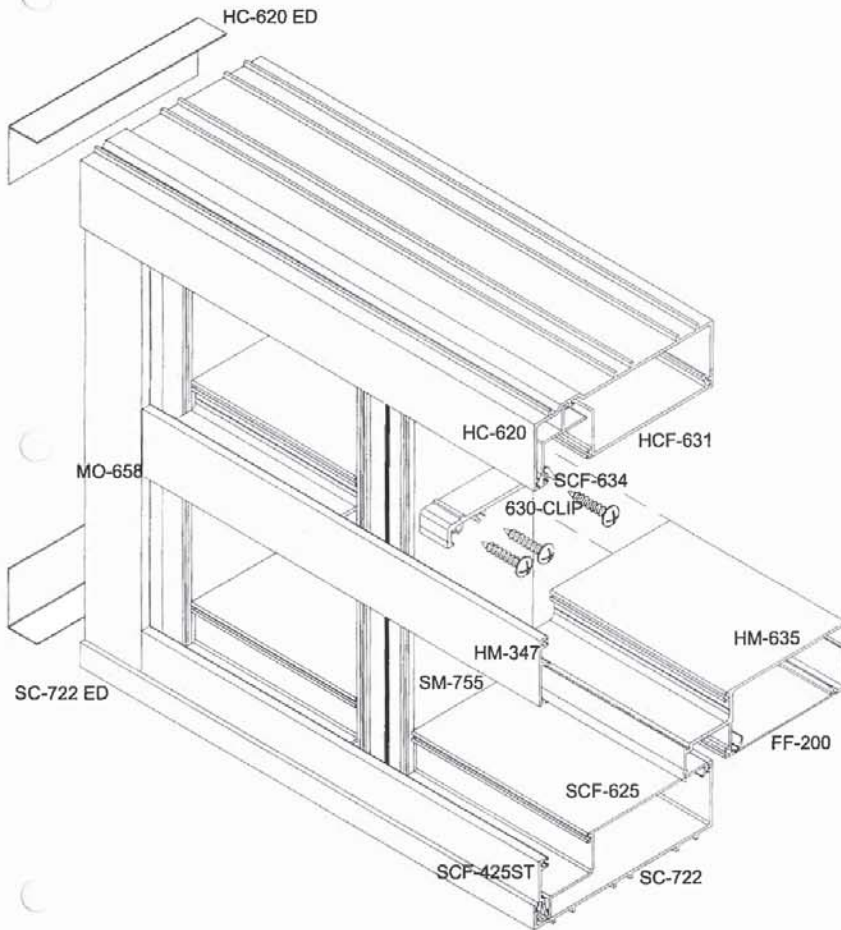


SEATING CUT SHEETS

ARCADIA,® INC.

AFG601 AND AFS601 SERIES
2" X 6" OFFSET GLAZED SYSTEM
FOR 1" GLASS

Typical 3-D



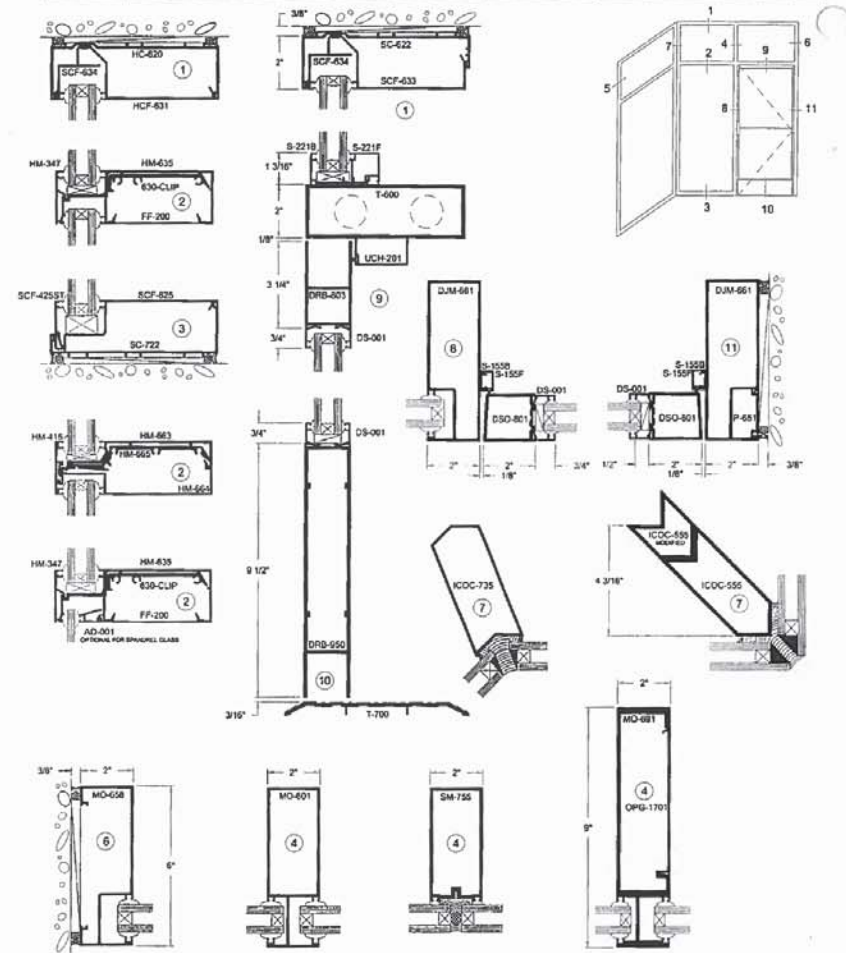
FOR DETAILED INSTALLATION INSTRUCTION SEE
INSTALLATION MANUAL AND SYSTEM TEST REPORT

3

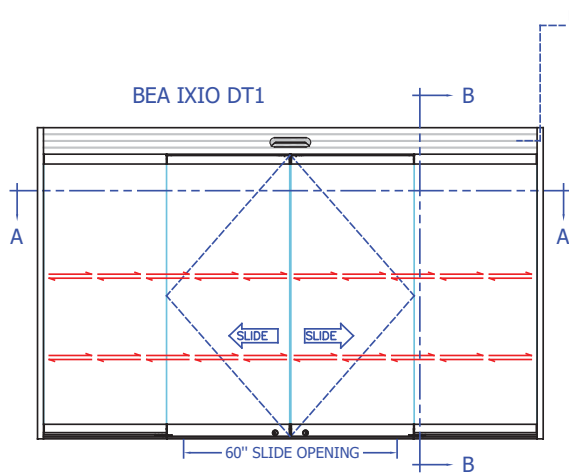
ARCADIA,® INC.

AFG601 AND AFS601 SERIES
2" X 6" OFFSET GLAZED SYSTEM
FOR 1" GLASS

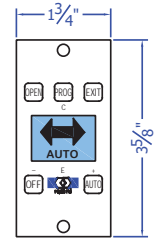
1/4 Scale



4



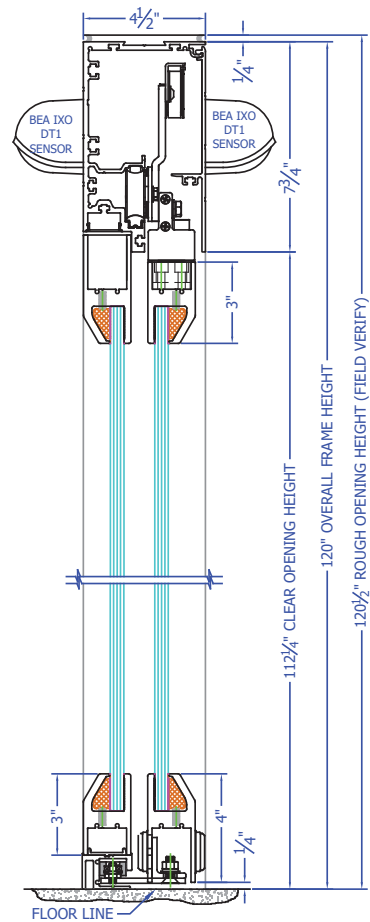
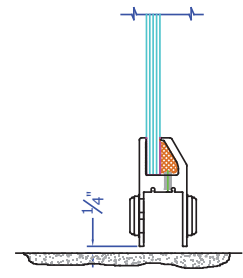
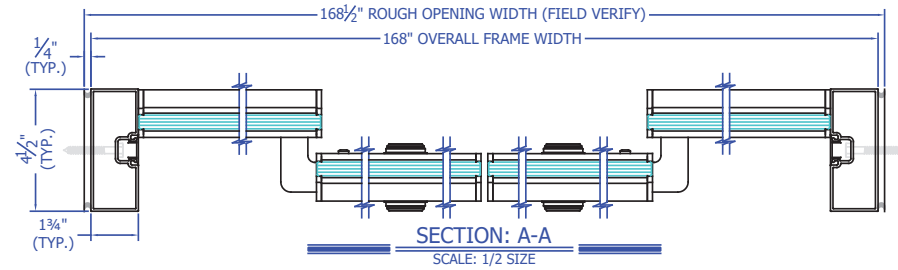
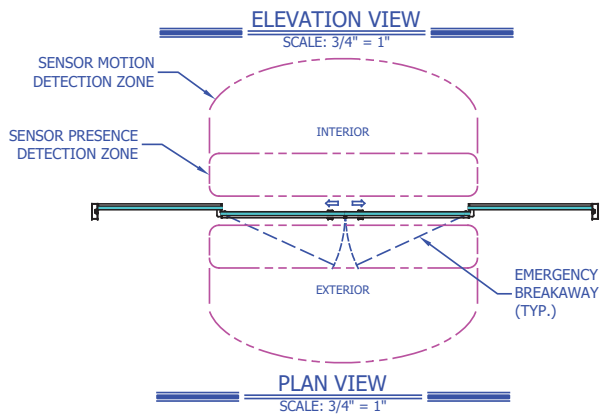
DISPLAY CONTROL PANEL PROVIDING THE FOLLOWING FUNCTIONS:
 OFF / LOCKED MODE;
 FULL/PARTIAL CYCLE IN 2-WAY & 1-WAY MODE; STATUS & DIAGNOSTICS.



CONTROL PANEL
 SCALE: FULL SIZE

- NOTES:**
1. FINISH: PPG Kynar 70% UC40577 Black Finish
 2. ACTIVATION AND SAFETY SENSOR, BEA IXIO DT1, ONE PER SIDE.
 3. THRESHOLD PHOTOELECTRIC SAFETY BEAMS AT 24" AND 48" ABOVE FLOOR.
 4. DISPLAY CONTROL PANEL (ONE PER UNIT).
 5. M.S. FLOOR LOCKS WITH KEY CYLINDER EXTERIOR AND INTERIOR
 6. 1/2" MONOLITHIC TEMPERED GLAZING TO BE USED IN DOOR PANELS.
 - A. 1/2" CLEAR TEMPERED (LOW IRON) MONOLITHIC GLASS
 7. CAULKING AND SEALING BY RECORD-USA INSTALLING DEALER
 8. DUAL MOTORS IN DOOR HEADER.
 9. THE FOLLOWING ITEMS TO BE PROVIDED BY OTHERS:
 - A. FINISHED OPENING PLUMB, SQUARE AND OF ADEQUATE CONSTRUCTION TO RECEIVE DOOR OPERATING EQUIPMENT.
 - B. 120VAC, 15A, 60 HZ, 1ϕ DEDICATED ELECTRICAL SERVICE TO EACH UNIT.
 - C. ANCHORING AND STRUCTURAL SUPPORT TO BE SUPPLIED BY G.C.; STRUCTURAL HEADER TO BE SUPPLIED BY G.C., PER LAFAYETTE GLASS

*** GC TO VERIFY R.O. SIZE AND FINISH COLOR



EXTERIOR DOOR WITHOUT THRESHOLD	DOOR MARK:	SERIES: S200, TYPE: Q-SX-SX-O	DISTRIBUTOR:	 record-usa 4324 PHIL HARGETT COURT MONROE, NC 28110
	SIZE: 3600, FINISH: 2010, DRAWN BY: SMW	JOB:	LOCATION:	
	REVISIONS:	ARCHITECT:	CONTRACTOR:	
	DATE:	DWG#:	SHEET 1 OF 1	